

# Beer Dispenser

## Beer Dispenser

### All Interior and Exterior Stainless Steel Construction

**\* Excellent Cooling System**

The powerful forced-air refrigeration system holds storage cabinet in a constant temperature.

**\* 3" Diameter Stainless Steel Insulated Beer Columns**

**\* Door Locks Standard**

**\* CFC Free**

Foamed-in-place, high density, close cell, polyurethane that is CFC free.

**\* CEC. California Energy Commission Certificated**

**\* MEA. City of New York Building Department Approved**



Model	Swing Door	1/2 Barrels	HP	AMPS	Weight	L D H	List Price
TBD-1SD	1	1	1/4	5.0	210	23.5 x 27 x 37	Available Soon
TBD-2SD	2	2	1/3	7.0	276	59 x 27 x 37	4,587.00
TBD-2SB	2	2	1/3	7.0	276	59 x 27 x 37	4,356.00
TBD-3SD	2	3	1/2	7.0	298	69 x 27 x 37	4,812.00
TBD-3SB	2	3	1/2	7.0	298	69 x 27 x 37	4,626.00

## CABINET INTERIOR/EXTERIOR SPECIFICATIONS

MODEL	TBD-2SD/2SB	TBD-3SD/3SB
Exterior Dimensions(LxDxH)	58.8"x27.1"x37"(49.2")	69.1"x27.1"x37"(49.2")
Comp.	1/3 HP	1/3 HP
Weight	276lbs	298lbs
Power	115V / 60Hz	115V / 60Hz
Amp.	7.0 A	7.0 A
Cord Length	9.85 Feet	9.85 Feet
Plug-In	NEMA 5-15P	NEMA 5-15P

\*Design and specifications can be changed without prior notice for product improvement.

\* Recessed Handles

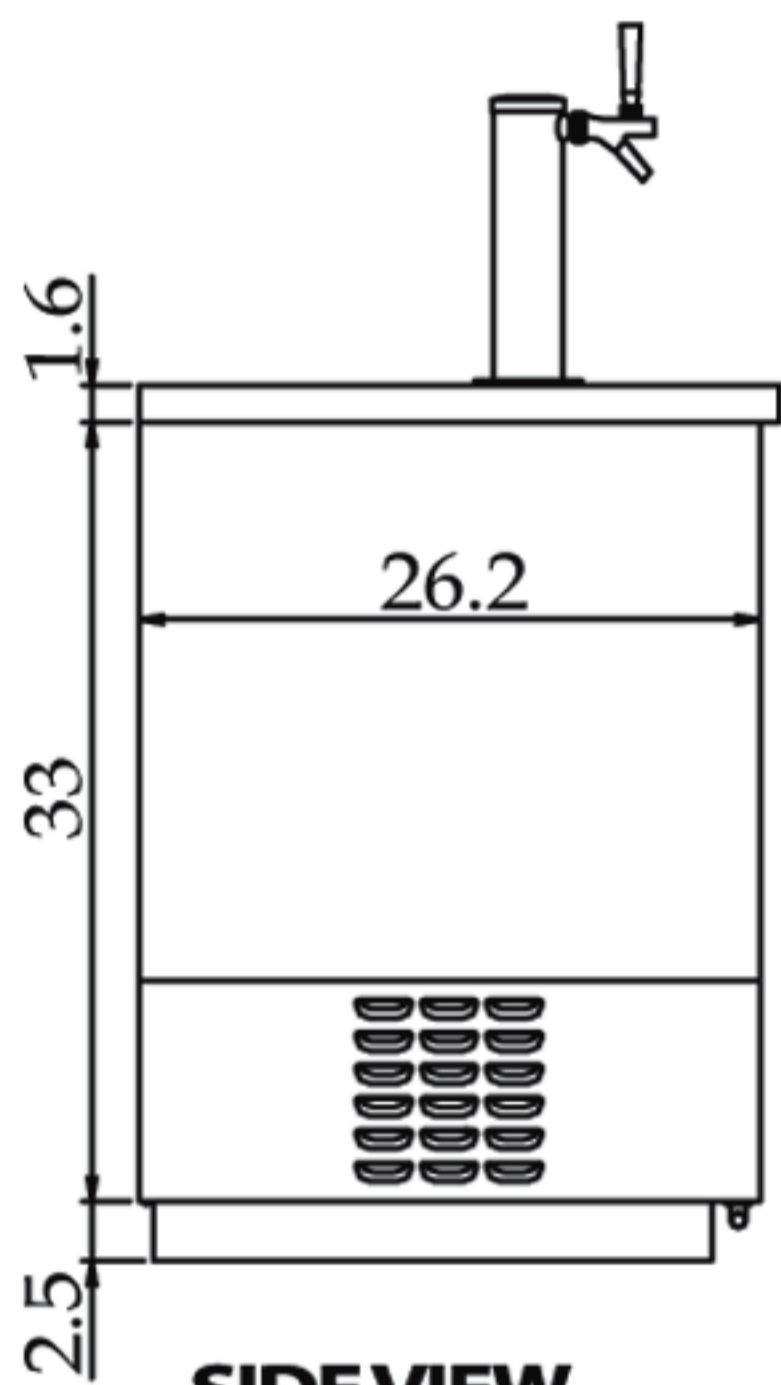
\* Simple Plug-in Installation

\* Incandescent Interior Lighting

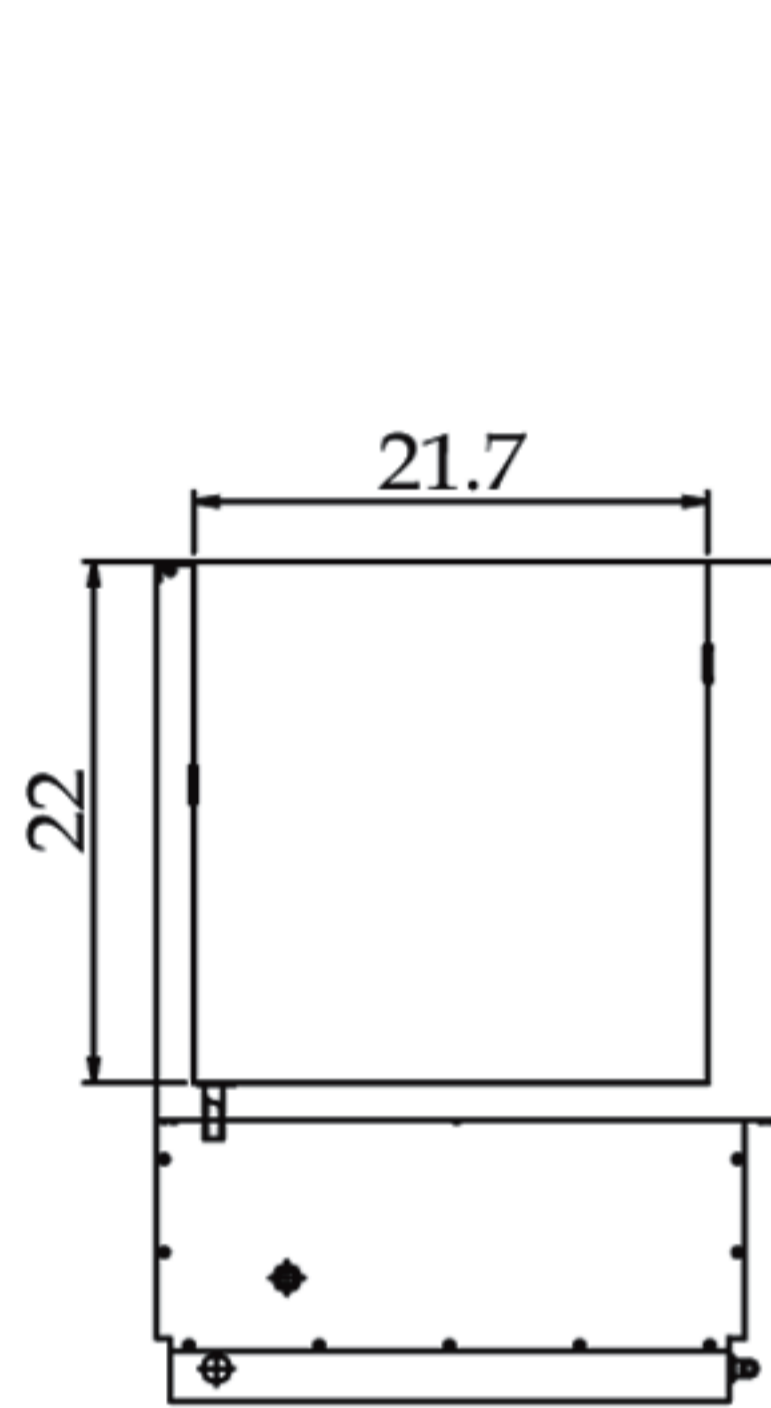
\* Holds 33°F~38°F

\* **18 Month Labor and Parts Warranty for Super Deluxe Series (SD Only)**

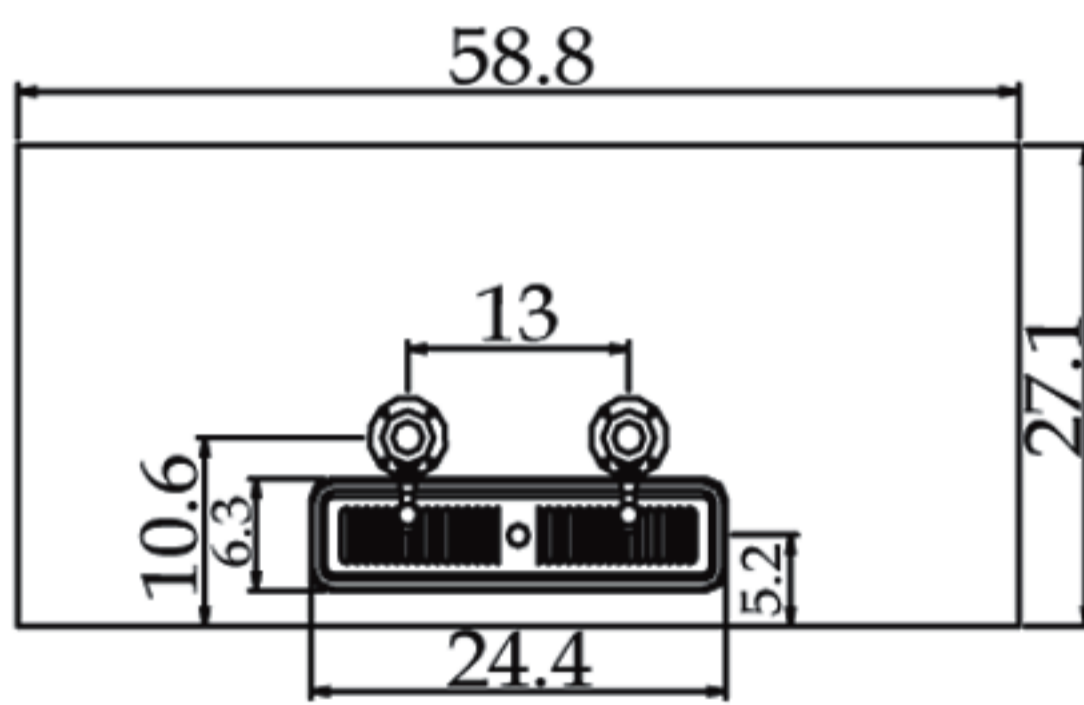
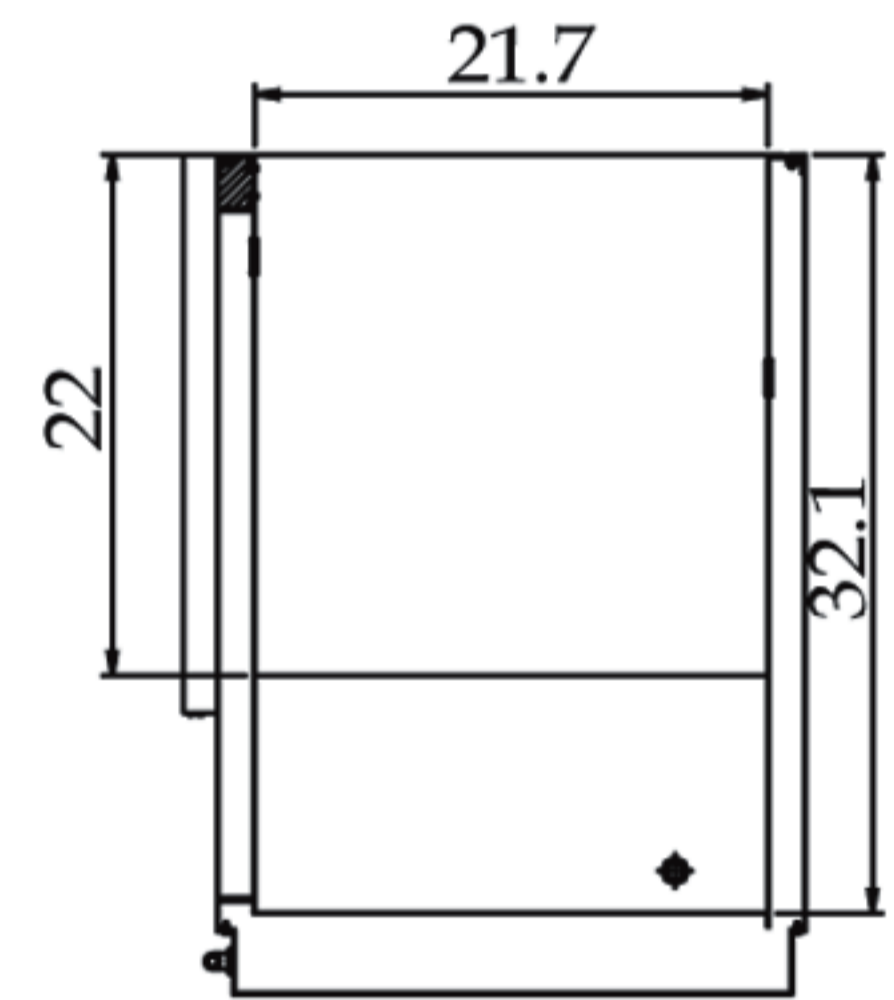
(unit : inch)



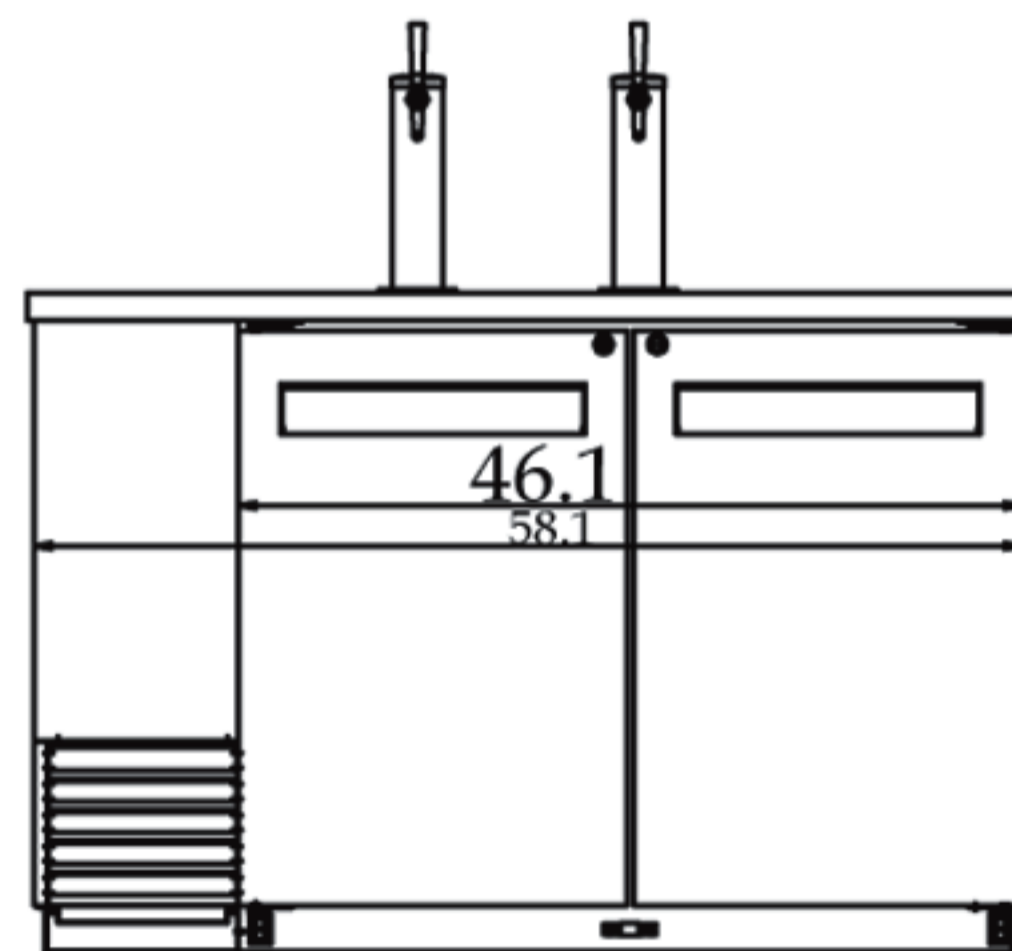
**SIDE VIEW**



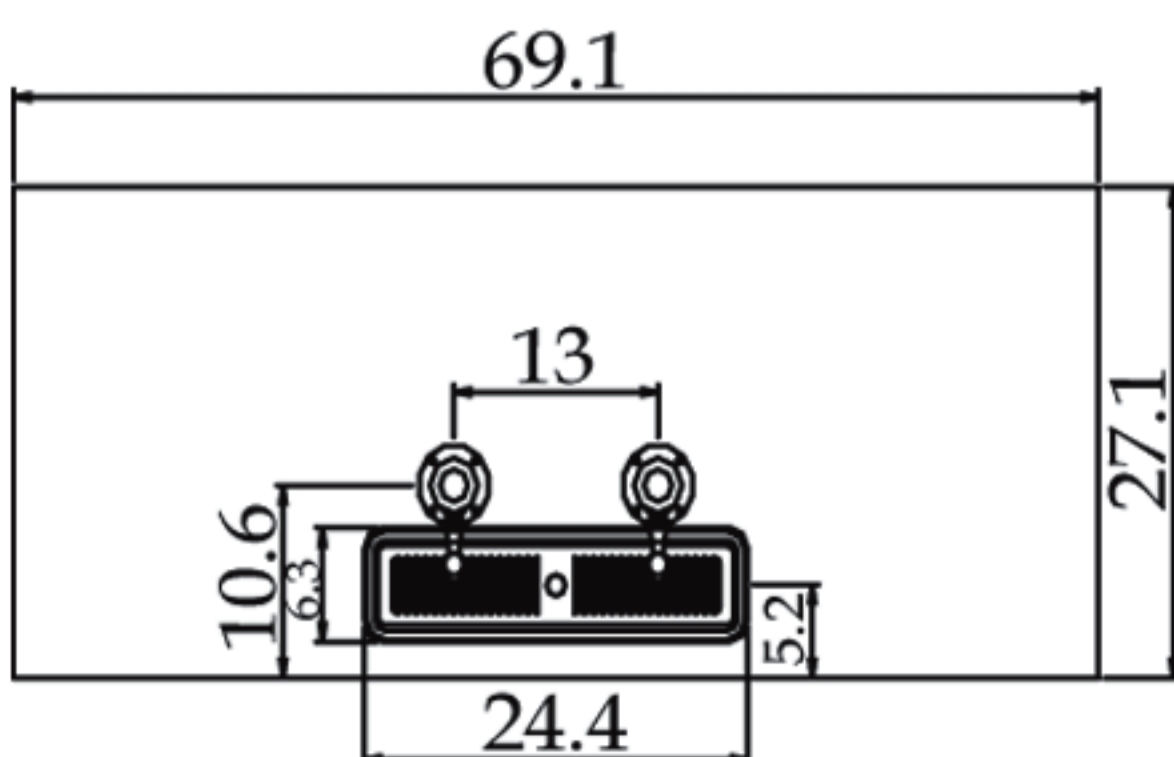
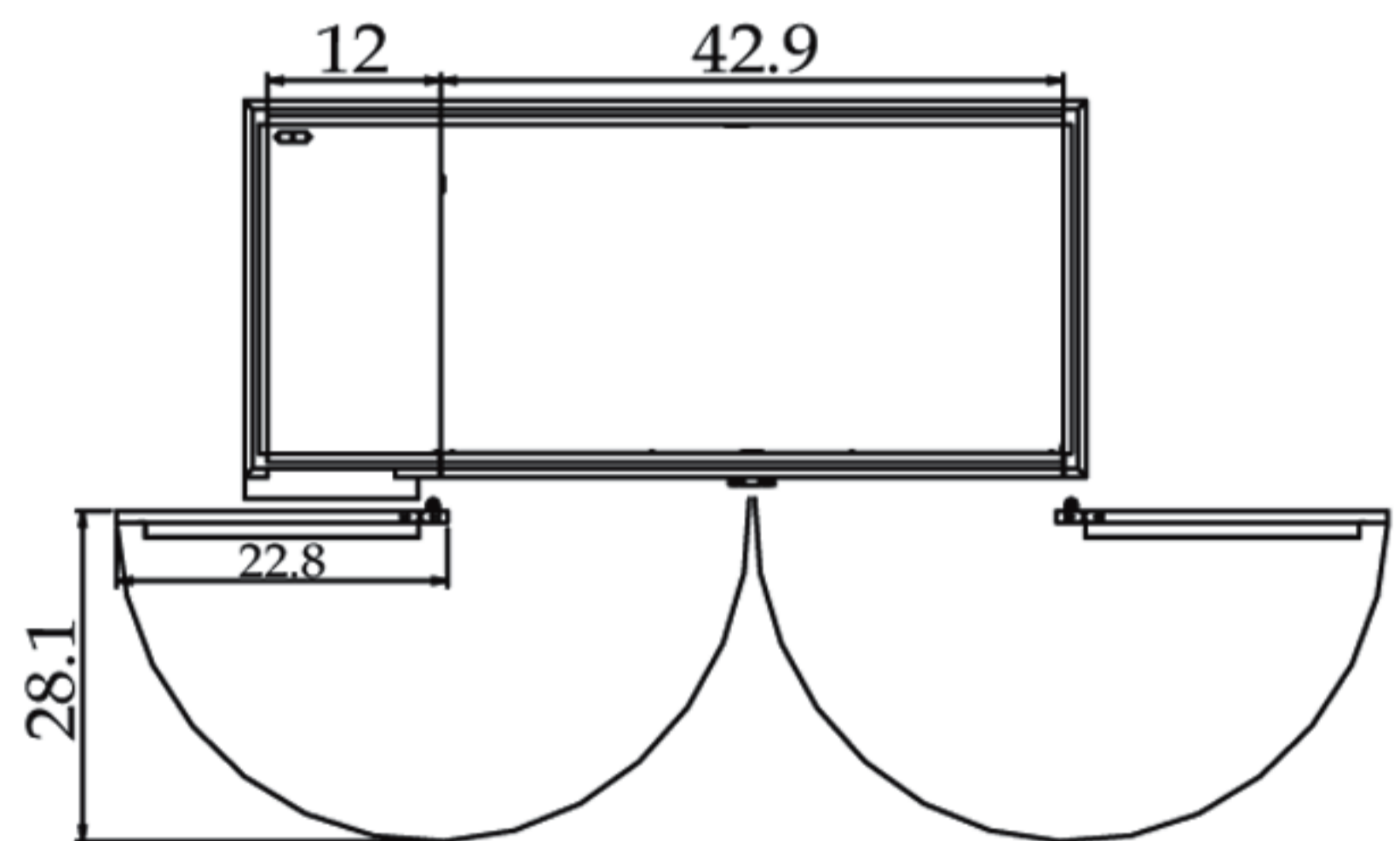
**SIDE VIEW**



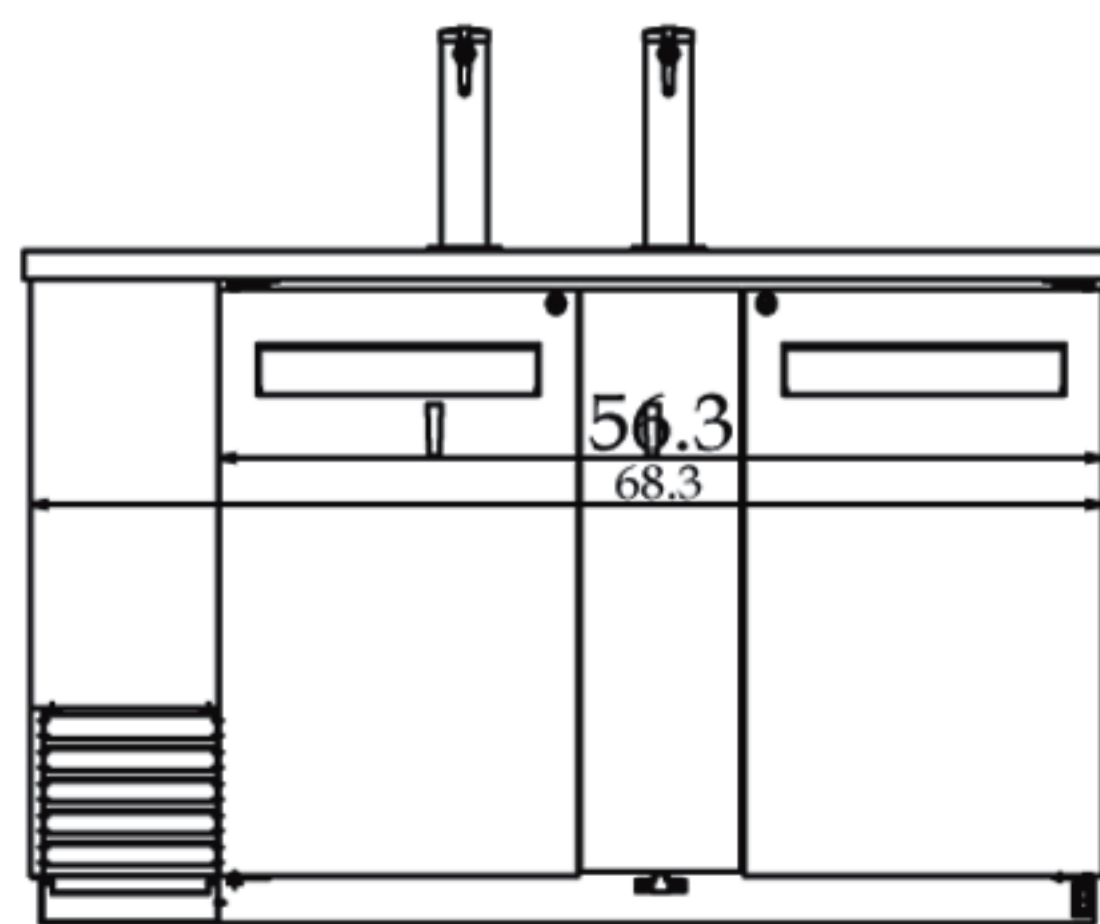
**TBD-2SD/2SDB PLAN VIEW**



**TBD-2SD/2SDB FRONT VIEW**



**TBD-3SD/3SDB PLAN VIEW**



**TBD-3SD/3SDB FRONT VIEW**

